

GET STARTED IN...

# ASTROLOGY & TAROT

...UNDERSTAND AND INTERPRET THEIR  
MEANING AND INFLUENCE ON YOUR LIFE



THE GET STARTED SERIES, BROUGHT TO YOU BY FS PUBLICATIONS

# **ASTROLOGY & TAROT**

**...Understand and Interpret Their Meaning  
and Influence on Your Life**

## **Terms and Conditions**

This publication and all the information within, are provided to you for information and education purposes only. The authors, creators and publishers of this publication are not doctors. The information contained on this site should not be construed as medical advice. Before beginning any exercise, diet, weight loss program or treatment it is vital you contact your healthcare provider. The advice and strategies contained herein may not be suitable for your personal situation. You should always consult with a medical health professional when dealing with any medical condition or program involving your health and well-being. Information about health and diet cannot be generalized to the population at large. Keep in mind you should consult with a qualified physician when embarking on any program. Neither the Publisher nor Author shall be liable for any loss of

## ASTROLOGY & TAROT

profit or any other commercial damages resulting from the use of this guide. All links are for information purposes only and are not warranted for content, accuracy or any other implied or explicit purpose. No part of this publication may be reproduced, stored in a retrieval system, or transmitted in any form or by any means, electronic, mechanical, photocopying, recording, scanning, or otherwise, except as permitted under Sections 107 or 108 of the 1976 United States Copyright Act, without the prior written permission of the Publisher and Author.

The Get Started Series, presented  
to you by FS Publications

# ASTROLOGY & TAROT

## Table of Contents

<b>Introduction</b> .....	5
<b>Chapter 1</b>	
<i>The Twelve Zodiac Signs</i> .....	6
<b>Chapter 2</b>	
<i>Dispelling Some Myths About Astrology</i> .....	8
<b>Chapter 3</b>	
<i>Planets</i> .....	19
<b>Chapter 4</b>	
<i>Aspects</i> .....	23
<b>Chapter 5</b>	
<i>Houses</i> .....	26
<b>Chapter 6</b>	
<i>The Chart Wheel</i> .....	30
<b>Chapter 7</b>	
<i>The Natal Chart</i> .....	32
<b>Chapter 8</b>	
<i>Basic Tarot Card Reading</i> .....	34
<b>Chapter 9</b>	
<i>Divination Spreads</i> .....	36
<b>Chapter 10</b>	
<i>The Major Arcana Cards</i> .....	40
<b>Chapter 11</b>	
<i>The Minor Arcana</i> .....	46
<b>Chapter 12</b>	
<i>The Seven Basic Chakras</i> .....	50
<b>Summary</b> .....	54

# ASTROLOGY & TAROT

## Introduction

*“Astrology is assured of recognition from psychology, without further restrictions, because astrology represents the summation of all the psychological knowledge of antiquity.”*

*~ Carl Jung ~*

It's been said that Astrology and Tarot are inextricably linked, and even a casual foray into the subject reveals that much of the terminology and symbolism are indeed interlinked. In this volume, we've combined twelve reports covering the most important aspects of Astrology and Tarot, into one user friendly volume.

The relationship between Astrology and Tarot presented in this ebook will provide a valuable insight in helping you understand and interpret Tarot readings and the meaning of their astrological associations in their symbolic form.

It is of course a matter of personal judgment for each Reader as to what significance to assign to the astrology of the card within the context of a specific reading or whether to use it at all.

With the seemingly random and chaotic paths our lives often follow, it's no surprise whatsoever that many millions of followers around the world actively study Astrology and Tarot to try to make sense of their lives.

So if you're at the beginning of your journey to understand Astrology and Tarot, or you're just mildly curious, then read on...

# ASTROLOGY & TAROT

## Chapter 1

### The Twelve Zodiac Signs

*“A physician without a knowledge of Astrology  
has no right to call himself a physician”  
~ Hippocrates ~*

#### **Aries**

The Ram, Fire Sign, Cardinal Sign, New beginnings, adventurer, courage, part of body: the ‘head’

#### **Taurus**

The Bull, Earth sign, Fixed sign, Possessive, calm, relaxed, materialistic, loves creature comforts, part of body: the ‘neck and throat’

#### **Gemini**

The Twins, Air Sign, Mutable, Communications, impulsive, changeable, inquiring, intelligent, exploring, part of the body: the ‘lungs, arms, and hands’

#### **Cancer**

The Crab, Water Sign, Cardinal, The home, shy emotional, intuitive, protective, domestic, part of body: ‘stomach and breasts’

#### **Leo**

The Lion, Fire sign, Fixed, Ownership, pride, ego, power, children, passionate, works well alone, part of body: the ‘heart and spine’

## ASTROLOGY & TAROT

### Virgo

The Virgin, Earth sign, Mutable, Attention to details, worrying, practical, analytical, discriminating, clean, a perfectionist, part of body: the 'colon'

### Libra

The Scale, Air sign, Cardinal, Marriage and union, partnerships, diplomatic, compassionate, balanced, part of body: the 'kidneys'

### Scorpio

The Scorpion or Eagle, Water sign, Fixed, Intense, death, rebirth, responsibility, genuine, purification, the mafia of the zodiac, the part of the body: the 'sexual organs'

### Sagittarius

The Archer, Fire sign, Mutable, Truth, religion, philosophy, generous, frank, enthusiastic, reason rather than emotion, adventurer, part of the body: the 'lower back and thighs'

### Capricorn

The Goat, Earth sign, Cardinal, Practical vision, unemotional, sober, orderly, control, manipulating, power, dependable, part of body: the 'knees'

### Aquarius

The Water Bearer, Air sign, Fixed, Detached, team work, friends, unconventional, humane, independent, warm, part of the body: the 'legs and hips'

### Pisces

The Fishes, Water sign, Mutable, Intuitive, accepting, understanding, impressionable, part of the body: the 'feet and ankles'

# ASTROLOGY & TAROT

## Chapter 2

### Dispelling Some Common Myths About Astrology

*“I was born during an eclipse. I believe very much  
in astrology. If you were born on an eclipse it  
indicates your destiny is chaotic”*

*~ Gloria Vanderbilt ~*

Most people only know about astrology from the horoscope columns they read in newspapers and magazines. But, those forecasts are for entertainment purposes only and should never be taken seriously. If they seem even remotely accurate, rest assured it is only by coincidence, because those columns have almost no bearing on the legitimate practice of astrology. Here are a few other myths about astrology that should also be dispelled:

- 1.** Astrology is not a religion, nor is it affiliated or associated with any religion or with satanism or with any specific belief system. You can believe in and participate in any religion you choose and still practice astrology.
- 2.** Astrology is about symbolism and has nothing to do with any purported physical energy emanating from a planet, moon, or star.
- 3.** Astrology cannot be used to predict an event, only the possibility of an event occurring, or a good time for a particular type of event to take place.



## ASTROLOGY & TAROT

4. Astrology is only a guide, a map of the potential in your life. However, no two people born at the exact same time and place will have the exact same life. The very nature of astrology speaks to your exercise of “free will” and the many choices and options you have for how you live your life.

### What Is Astrology?

Astrology is a complex art and science which applies symbolic meaning to astronomical information as it existed over two thousand years ago when the practice of astrology was first documented in writing by ancient astronomers and astrologers.

Western or Tropical astrologers use the ancient positions of the constellations and Sidereal (aka Vedic or Hindu) astrologers use current astronomical positions. The two systems are very different but work equally well. Astrologers begin by erecting a natal chart, or horoscope, based on the date, time, and place you were born. Today, most charts are done on a computer which makes them very accurate. But, they are only as accurate as the information you provide. Any reputable astrologer will advise you to obtain more accurate birth information or to have your chart rectified if you only know that you were born “around 5 p.m.”

Astrologers interpret everything in your chart individually and then integrate it all for you into a picture of you and your life. Interpretations come in many forms: basic insight into your personality; examining specific trouble spots in your life; comparing and contrasting your chart with that of a loved one, friend, co-worker, etc.; looking at career options and financial

## ASTROLOGY & TAROT

indications; finding the best place to live; forecasting future opportunities; selecting the best time for a wedding, to start a business, etc.; spiritual growth; and, answering questions.

Most astrologers have a general practice which incorporates a variety of these services, and they may also have some areas in which they specialize, such as relationships, careers, horary, or electional.

The best way to use astrology is to learn to evaluate a problem on your own, to examine the choices you have to make in order to fix the problem, and then to consult your astrologer to see in which ways the possible solutions will work for you and when the best time is to make changes, take risks, be patient and wait, plan, etc. With all that information in hand, you will possess a powerful knowledge with which to solve your problems, change your life, and be the person you always wanted to be.

### **Astrology and Your Birth Time**

Astrology is extremely accurate. But, it is only as accurate as your birth time, which is used to calculate not only the planetary positions, but also your Ascendant (Rising Sign), to the exact degree and minute. That calculation then determines the degree on the Midheaven and all of the house cusps. The cusps then determine in which house your planets will fall. Without an accurate birth time, interpretations and forecasts are invariably incorrect. All of this information is then used in interpreting your personality, determining your career choices, comparing and contrasting your chart with those of other people you know, and forecasting events in your life.

## ASTROLOGY & TAROT

Before you schedule a consultation or order charts and reports, you should obtain a copy of your birth certificate. If you do not have a birth certificate, if the time is not stated on yours, if you suspect your birth certificate is in error, or if you have only an estimated birth time, you can have your chart rectified (see next section).

But what about your birth certificate? How accurate is it? It may not be as accurate as you think. It's not hard to get the date and the place correct, but birth times are an entirely different story. Since doctors and nurses are not usually astrologers, they give little attention to the exact time of birth. For example, they may round off an 8:38 birth time to 8:40 or 8:35. A doctor may fill out the birth certificate later on and use an estimated birth time that could be far earlier or later than the true time of birth, or than the time recorded on the delivery room records.

Depending on where and when you were born, your birth certificate may not even have a space for the time of birth. Some people have no written birth certificates at all because they were born at home, or during times when birth certificates were not considered necessary, or in countries where birth certificates are or were not issued. Some parts of the United States have other problems with birth certificate times. For example, during certain years in the state of Illinois, War Time -- the precursor to our modern Daylight Savings Time -- was in effect but was not observed by all hospitals, many of which continued to operate on Standard Time. That means that if you happen to have been born in Illinois during those times, your birth certificate could be off by an entire hour.

## ASTROLOGY & TAROT

Without an exact birth time, astrology in general, and predictive astrology in particular, are rarely accurate. There may be some general information and interpretations that are correct, but the subtleties and events-oriented aspects will be wrong.

### Rectification of the Birth Time

When you don't know your time of birth or suspect it is off by a few minutes or more, you can have your birth time rectified. Rectification is a very time-consuming process that involves forecasting backwards in your life and adjusting your birth time until it coincides with all the significant events in your life. It can be a costly investment. However, the time and costs can be considerably less if you have a birth time on your birth certificate from which to start the process, and if you have a very good memory for as many events in your life as possible.

Rectification is not a job for an amateur; not even all professional astrologers are up to the task. But, for astrology to work properly, an accurate birth time is essential, and rectification is the best way to determine it. So if you want to get your chart rectified, start by obtaining a copy of your birth certificate and then make a detailed list of all the significant events in your life (e.g., births, deaths, relocations, marriages, divorces, career moves, etc.), asking your friends and family members for help along the way if you can't remember exact dates, times or places. After you've done all of this preparatory work, you can start looking for an astrologer who is experienced in rectification.

Rectification is an important investment for anyone who regularly uses and relies on astrology for guidance in life. Once

## ASTROLOGY & TAROT

your exact birth time has been properly determined, you will find that astrological consultations are far more accurate than you ever imagined possible, and that the predictive advice you receive will be right on the money.

### Selecting a House System

Natal charts are divided into twelve sections called “houses,” which indicate the different areas of interest and activity in your life. How those houses are divided up depends on the house system used by you or your astrologer. There are at least eight major house systems in use throughout the world, but the three most commonly used in the United States are Placidus, Koch (pronounced “coke”), and Equal. These three systems result in the same Ascendant (Rising Sign) but have different Midheavens and house cusps.

The Placidian system is named after its 17th century inventor, Placidus de Titus. It is used by at least 80% of astrologers in the U.S. because it is the most widely known system and its house tables are readily available in most areas. The Koch system is the second most commonly used house system in the U.S. It originated in Germany and is named for its first publisher, Dr. Walter Koch.

Both Placidus and Koch systems result in the same Ascendant which is always the cusp of the first house. The Midheaven is always the cusp of the tenth house, but each system results in a different sign (or the same sign at a different degree) on the Midheaven. Placidus and Koch are “unequal” house systems which can result in interceptions. An interception occurs when

## ASTROLOGY & TAROT

two opposite signs are each on the cusp of two houses, while another two opposite signs are not on any house cusps at all and are instead inside of houses with neighboring signs on their cusps. But in any given chart, the signs intercepted by Koch are not necessarily the same ones that would be intercepted using Placidus.

The Equal house system is just what its name implies. All the houses have the same degree on each cusp, and there are no interceptions. Equal house systems are especially useful for people born in the northernmost and southernmost latitudes, and this system is the most popular one in use outside of the United States.

No given house system is better than another, only different. Astrologers select the systems which they feel work best for them and for their clients. They also select systems which best suit the kinds of astrology they practice, giving them the desired interpretive results. For example, those who practice astropsychology are often inclined to use Placidus, and those who practice Uranian astrology are more likely to select Koch. If you are unsure which system is best for you, try both, or try one of the other house systems, and see which produces the most reliable results. That's the best house system -- for you.

### About Orb

When planets form relationships such as trines, squares, oppositions, etc., those relationships are called aspects. The term "orb" refers to the range of degrees between any two planets when they are in aspect to each other.

## ASTROLOGY & TAROT

A wide (large) orb of 10 degrees is felt by only a few people because you would have to be very sensitive to the earliest and slightest influences of the aspect. However, a tight (small) orb of 3E or less means the aspect is more intense and significant in nature, and it is felt by nearly everyone, especially the closer it is to being exact (0E). The reports advertised on this website make use of small orbs of 3E or less when possible.

### About Relocation

Everyone wants to know where the best place is for them to live. That ideal place where your life will work perfectly. But, what constitutes a “best” place is not the same for everyone.

Astrology can help you find places that are good for you, but that doesn't mean you will like them. For example, two places that are great for me astrologically include Easter Island and a place near the Arctic Circle named Cambridge Bay. I don't like islands or snow, so I'm not going to either location.

Some astrologers believe that the farther away from your birthplace you go, the less likely you are to follow the path on which your spirit was set when first it came to this plane of existence. In some ways this makes sense, because wherever you move, you will have to make some form of compromise. No place is 100% perfect for anyone.

I lived for many years in Venice, California, a place that I loathe with every fiber of my being. I could not wait to get out of that place. Finally, I moved up the coast to my hometown of Monterey, a place I truly love and that is fairly close to my

## ASTROLOGY & TAROT

birthplace of San Francisco. But, is it perfect in Monterey? Close, but not quite.

Astrologically, Monterey is good for me because I don't get one of the very negative aspects I had in Venice. But, geographically speaking, I moved to a place that has a very high cost of living with pitifully low wages. All things considered, however, it is the perfect place for me.

When I first set out to decide where to live, it was during a time when I spent a good deal of each year lecturing throughout the United States and other English-speaking countries. On various lecture circuits, I managed to visit all but four states, some of which I visited on several different occasions.

I must have relocated my chart at least 100 times, trying to find my ideal place. I ended up with a list of fifteen cities that were promising astrologically. Out of those, I actually liked about nine.

When it came time to narrow down my selections, astrology didn't help. I had to actually think about what my life would be like in those cities. Boy did that ever narrow the choices down fast! Now I was left with only three cities, one of which was Monterey. When it came to making the final decision, I picked the city where I actually knew people and had lived before. Monterey had changed a lot, but it still felt like home.

When you decide to relocate, you need to look at more than just your relocated chart. You need to visit different places, check out the jobs, the weather, the housing, the schools, etc.



## ASTROLOGY & TAROT

And, if you have a spouse and family, you and your spouse will need to agree on a community that is good for the two of you and your family.

Use astrology as a tool to help you narrow your choices. Then, take some time to really research the cities and make several visits to each prospective “best place.” When it’s time to move, you will make your decision based on facts and first-hand evaluation. And that’s how to find your best place to live.

### **Many Happy Returns with your Solar Return**

Solar returns are also called birthday charts. In fact, it’s from the solar return that we get the expression “many happy returns” which we say when wishing someone a happy birthday.

Your solar return is calculated for the exact date and time when the Sun returns to the place it was in when you were born. This means that your true birthday may fall on the same date you were born, or it may fall the day before or after, depending on when the Sun reaches the correct degree. For example, if you were born on September 28, 1950, when the Sun was at 05ELIB 00’, your solar return would fall on September 27th in the years 2004, 2005, and 2006.

Many reputable astrologers believe you can affect the outcome of your solar return by being in a place other than your birthplace or your place of residence at the time of the return. Some people will go to extraordinary lengths to visit another town or country for their solar return. This is because calculating a solar return for a different location can cause certain desirable

## ASTROLOGY & TAROT

planetary aspects to appear, and certain undesirable planetary aspects to disappear, or a planet or planets can change houses if the chart is erected for a different place.

However, while the ancients believed in erecting a solar return for the location in which a person is at the time of the return, people back then did not travel much, and they could not have anticipated our highly mobile lifestyles.

The solar return takes the single day of the return and uses the 24 hours that follow the return to predict the future events for that year. But, we can argue that, like progressions, we need to recalculate the solar return for the place where the person lives once they return home. Why is the solar return any different than a progression in that respect? After all, if I went to New York in June, I wouldn't erect my progressions there and then return to the West Coast and rely on those New York calculations. When I progress the planets in my solar returns to predict events, it has always been the solar return chart erected for my residence that has been reliable.

*“Astrology is one of the earliest attempts made by man to find the order hidden behind or within the confusing and apparent chaos that exists in the world”*

*~ Karen Hamaker-Zondag ~*

# ASTROLOGY & TAROT

## Chapter 3

### 'Planets'

*“Men should take their knowledge from  
the Sun, the Moon and the Stars”*

*~ Ralph Waldo Emerson ~*

Each sign of the Zodiac is represented by a planet. Here are the Planets and some of what they mean:

#### **Sun**

The Sun is associated with a sense of power. The house that the Sun occupies will be strongly emphasized. The activities of that house will be of great importance to the subject throughout his life. The characteristics of the sign associated with the Sun are usually intensified. The positive aspect of the Sun is creativity, affection and generosity. The negative trait of the Sun is arrogance.

#### **Moon**

The Moon conveys the sense of instinct and cyclic changes. The Moon is the second most important planet aside from the Sun. The characteristics of the sign in the Moon usually reflects the personality of the subject. Habits, emotions, motherhood, family and social response are the associations of the moon. Positiveness of the Moon is imaginativeness, business shrewdness, maternal instinct and patience. Negative traits include stubbornness, unreliability and irrational behavior.

## ASTROLOGY & TAROT

### Mercury

Mercury is communication. Mercury is associated with computers, intellect, science and mental perception. The positive characteristics of Mercury are good memory, logical, communicative and clever. The negative traits are mental constipating, argumentative, nervousness and sarcastic.

### Venus

The keywords of Venus are love and harmony. Venus is associated with feelings, love, beauty, arts, and fashion. The positiveness of Venus is friendly, well mannered, artistic and loveable. The negative traits are selfish, and unrealistically romantic.

### Mars

Fire and energy come to mind with Mars. In ancient times, Mars was regarded as the bringer of wars. It has been perceived as the most powerful planet. Aggression, quickness in action, war and weapons and masculinity are always associated with Mars. The negative traits are boisterous, war-like and quarrelsome.

### Jupiter

The keyword of Jupiter is expansion. Jupiter is sometimes known as the good planet. The House in which Jupiter is found usually is associated with very favorable outcomes in that department of life. The expanding quality of the planet can also be associated with the physical size of Jupiter...the largest planet in the solar system. Positive traits are compassionate, optimistic, sportive. Negative traits are extravagance, irresponsible, indulgent, over-optimistic, and care-free.

## ASTROLOGY & TAROT

### Saturn

Limitation and hardship are the main attributes of Saturn. A subject always encounters limitation on the activities in life that are characteristics of the House where Saturn is. Saturn is always associated with slow moving, difficulty, and tension. Because Saturn is a planet that tests the success or tenacity of a subject's action, Saturn is positively associated with perseverance and fortitude. As well, Saturn sometimes is associated with ill health. The positive traits are trustworthiness, tenacity, and discipline. The negative traits are self-pitying, depressive, difficult.

### Uranus

Sudden changes is best to represent Uranus. Uranus is associated with modern science, medicine, sex and tele-communication radio systems. The positive traits are inventive and original. The negative traits are sexually perverted, abnormal and impulsive.

### Neptune

The keyword of Neptune is unknown. Neptune may reflect the hidden potential capability of a person. The positive traits are subtle, artistic and sensitive. The negative traits are indecisive, careless, and unworldly.

### Pluto

Due to its recent discovery (1930), astrologers have not been certain of what Pluto is best to associate with a subjects characteristics. The best to associate with Pluto is the marking of a new beginning (the end of a cycle) of a life event. Pluto very often is symbolically associated with business, the hidden and unconscious power. The positive traits are financial astuteness, able to start new in unfavorable circumstances. The negative traits are underworld association, and seediness.

## ASTROLOGY & TAROT

### Ascendant

The Ascendant in a birth chart is known as the rising sign. It is the starting point of the first house in a chart. Contrary to the standard horoscope analysis in the newspaper, where the personality of a person is based on the Sun Sign (the sign where the sun is), astrologers usually put emphasis on the characteristics of the first House, or Ascendant, to project a personality profile.

### Mid Heaven

On the birth chart, the Mid heaven is the point where the sun is found a midday. The sign where the Mid heaven is found not only has a strong bearing on the subject's outward expression of oneself in one's world, lifestyle, choice of career, attitude, but also in events that the subject has no direct control. The Mid heaven represents ego, and the characteristics that are associated with the sign in which the Mid heaven is found, are expressed in an external manner.

### Part of Fortune

In what area you would do well in. Luck.

# ASTROLOGY & TAROT

## Chapter 4

### Aspects

*“The signs of the zodiac are karmic patterns; the planets are the looms; the will is the weaver”*

*~ Author Unknown ~*

Aspects are an important part of modern astrology. As the planets move in their elongated orbits around the Sun, they form various angular relationships with one another, using the Sun (or Earth) as the center. These are called Aspects.

The most popular aspects result from dividing the circle by numbers like 1,2,3,4, resulting in aspects such as the conjunction (0 degrees), opposition (180 degrees), trine (120 degrees), square (90 degrees), and so forth. When two planets form an aspect with one another, their energies and natures are said to combine and work in harmony or discord.

For example, when two planets are exactly on opposite sides of the Sun (earth), they are in opposition.

The most popular aspects can be divided into three main categories:

#### **1. Emphatic aspects**

The emphatic aspects are those that emphasize or align two planetary energies with one another. Conjunction (0 degrees) ...two planets at the same point in the zodiac are said to be in conjunctions. Their natures are fused or blended into one...

## ASTROLOGY & TAROT

Opposition (180 degrees) ...two planets at opposite sides of the zodiac. The energies are in alignment with each other. They can pull together or apart, depending upon the nature of the planets involved.

### 2. Hard aspects

Square (90 degrees) and semi-square (45 degrees). These represent challenge, obstacles, and substance. They provide meat and potatoes in our life. Too many can block or obstruct the life flow, yet too few can cause life to be weak or thin.

### 3. Soft aspects

Trine (120 degrees) and sextile (60 degrees). The soft aspects bring ease, clarity, and vision to our lives. We can see, grasp, and understand what is happening. Too few of the soft aspects means we don't know what we are doing or what is happening in our lives, while too many soft aspects make for a life that runs cool, is overly mental, and lacking in substance.

Exact aspects and aspect's 'orbs'. Aspects between planets gradually form, become exact and separate.

When an aspect is exact, it has its greatest impact. Yet, the effect of most aspects can be felt for some time before and after the moment when it is exact. The range within which an aspect is in operation is called its 'orb of influence', or simply its orb. An orb of one or two degrees of arc on either side of the exact aspect is considered a close or tight orb, while an orb of 10 degrees is loose.



## ASTROLOGY & TAROT

Also worthy of consideration when looking at aspects are the planets involved. Aspects to the Sun and Moon are most important, followed by the planetary aspects involving Mercury, Venus, Mars, Jupiter, Saturn, Uranus, Neptune, and Pluto. If your natal chart has an accurate birth time, then aspects to the chart angles (ascendant and midheaven) are also important. The particular combination can make a difference. Aspects between planets such as Saturn and Mars are obviously more potentially explosive than the same aspect between Venus and Jupiter.

### Aspect Symbols

1	Conjunction:	0 Degree
2	Semi-Sextile:	30 Degrees
3	Sextile:	60 Degrees
4	Square:	90 Degrees
5	Trine:	120 Degrees
6	Sesquiquadrate:	135 Degrees
7	Opposition:	180 Degrees
8	Quincunx:	150 Degrees

# ASTROLOGY & TAROT

## Chapter 5

### Houses

*“There is no better boat than a horoscope  
to help a man cross over the sea of life”*

*~ Varaha Mihir ~*

We assume that the Earth is a fixed point, and that all other cosmic bodies revolve around it once a day. The main circle of the chart is divided into 12 equal segments. One segment, or House equals two hours out of the total 24 hours.

Houses relate to everyday activities; the first to personality, the second to possessions, and so on. A planet or planets placed in a particular House affects the area of life represented by that House in a manner typical of the planet. The House must be considered according to the sign in which the cusp, or starting point, of the particular House falls.

The area of life represented by the 12 Houses are as follows:

1. Personality, health, disposition. It represents how one appears to the outsiders.
2. Possessions, wealth, worldly resources. The sign on cusp may indicate sources of income.
3. Family ties, education, short journey. The mind is associated with this House.
4. Home, domestic life parenthood.
5. Creativity, children, speculation, love affairs. This also relates to looseness of behavior or indulgence.

## ASTROLOGY & TAROT

6. Work, subordinate. It is the attitude towards services to the outside world.
7. Partnership (love and Business) The sign on cusp gives good indication of marriage partner.
8. Inheritance, life and death, sex, crime. It is an attitude towards life. It represents big business.
9. Philosophical views, higher forms of education. This House has a bearing on moral ideals and conscience.
10. Career, ambition, all matters outside the home. A social responsibility that affects one's appearance.
11. Friends, acquaintances, intellectual pleasures. It is the objectives in life.
12. A need for seclusion, hospital visiting, self sacrifice. The presence of many planets here indicates subject's susceptibility to drugs.

### Elements

The 12 signs are separated in 4 elements, Fire, Earth, Air and Water. By examining the different planets in these signs together with the planets in the qualities of signs, astrologers can draw a profile analysis of a subject.

#### Fire...

Aries, Leo, Sagittarius...People of fire signs are explosive,volatile, energetic. They are leaders, inventors and adventurers. Their weaknesses are the tendency of doing their work to their extremes and burn themselves out. The Fire attributes are best to be counterbalance by Earth signs.

#### Earth...

Taurus, Virgo, Capricorn...People of Earth signs are practical,

## ASTROLOGY & TAROT

cautious and reliable. If they are lacking (few Earth signs) they lack imagination and creativity.

### Air...

Gemini, Libra, Aquarius...Air signs are responsible for the intellectual activity, thought and philosophy. People who possess many planets in the Air signs are good planners. Without Air signs, subjects may have difficulty in communication, and be weak in artistic inclination. The excess of planets in Air signs are best to be counterbalanced by planets in the Water signs.

### Water...

Cancer, Scorpio, Pisces. These are emotional signs. The planets in Water sign moderate the practicality of Earth, the ideas of Air, the careless energy of Fire.

In astrological interpretation, the element analysis is most traditional. For example, many planets in the Fire sign of a chart is indicative of the subject being very lively and enthusiastic. Though this interpretation is simplistic and direct, astrologers must also consider the effect of the Qualities and Aspects of the subject's birth chart to draw a complete personality profile.

### Qualities

The 12 signs are separated into 3 qualities, they are Cardinal, Fixed and Mutable. By studying the combination of different planets in the 3 different qualities of signs plus the Elements of Signs, astrologers can also draw a complete personality profile of a subject.

### Cardinal...

Aries, Cancer, Libra and Capricorn. It is enterprising and outgoing.

## ASTROLOGY & TAROT

### Fixed...

Taurus, Leo, Scorpio and Aquarius. It is resistant to change.

### Mutable...

Gemini, Virgo, Sagittarius and Pisces. It is adaptable and changeable.

Each sign of the same quality expresses its quality differently. For example, Aries and Cancer are both Cardinal, but Aries is of Fire and Cancer of Water. Therefore, both Aries and Cancer show signs of enterprising, but Aries will show an initial enthusiasm towards enterprising in the beginning whereas the Cancer will steadily show the quality through emotions. The interpretation of elements and qualities must also be combined with the overall context of Aspect interpretation.

# ASTROLOGY & TAROT

## Chapter 6

### The Chart Wheel

*“Astrology is a language. If you understand  
this language, the sky speaks to you”  
~ Dane Rudhyar ~*

The Chart Wheel, is a map of the space surrounding us at the time of our birth. The wheel is divided in 12 sections called Houses. Planets in the heavens are placed on the Chart Wheel in the houses that correspond to where they actually are in the sky at birth.

In the Chart Wheel, the planets are placed in their Zodiac positions. The Zodiac stretches in a circle through all 360 degrees of the surrounding sky, and this circle is divided into sections of 30 degrees, the familiar 12 signs. Planet positions are measured within signs by degrees, minutes, and seconds of circular arc. Each degree contains 60 minutes of arc and each minute of arc contains 60 seconds of arc.

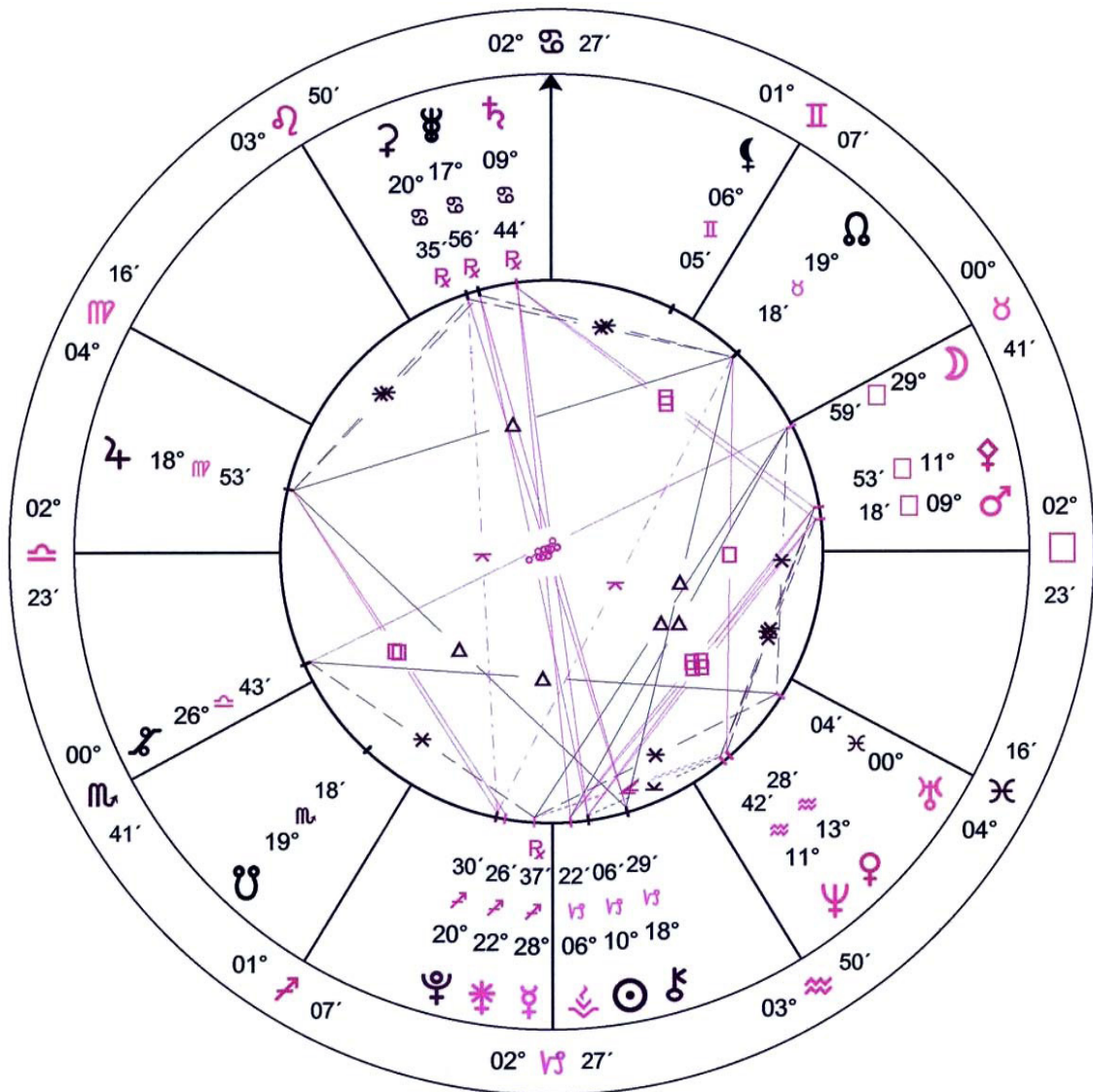
The Chart Wheel is divided into 12 sections called Houses. The houses are numbered from 1 to 12. The pie-like lines that divide one house from the next are called house cusps.

Keep in mind that our Earth makes a complete turn on its axis once in 24 hours. The Chart Wheel represents the space surrounding where we were born. It is as if we were standing outside with the sky above us (upper part of chart) and the

# ASTROLOGY & TAROT

Earth beneath our feet (lower hemisphere). As the Earth turns, it brings each of the 360 degrees of the zodiac to any part of the wheel once in 24 hours, a new degree of the zodiac every 4 minutes.

## Zodiac Chart Wheel



# ASTROLOGY & TAROT

## Chapter 7

### The Natal Chart

*“I will look on the stars and look on thee,  
and read the page of thy destiny”  
~ Letitia Elizabeth Landon ~*

The Natal Chart is a map of your life, at the time of birth it's like taking a picture of the planets, the universe stopped at that moment in time. It is what the universe has to say about who you are and what you may become. The seeds of the future are always sown in the present, but can we read them? This is what the study of astrology is about...reading the signs of the times and listening to what they have to say about ourselves, now and in the future.

A Natal Chart is made from your month, day, year, time of birth (am/pm), city and state of birth. This gives you, your own personality, the person you are and will become!

The planets will not be in the same placement at the time of your birth again for another 25,000 years, there are no two personalities the same in the world...you are unique!!

The Sun, Moon and Rising form your personality, it's like a pyramid, Sun on top and Moon and Rising at each bottom end. There is a treasure chest of information in a Natal Chart!



## ASTROLOGY & TAROT

### Progressions

Progressions contain the primary timing for your development and growth and show how you evolve and grow. They are generally felt internally. You may make external changes based on them, but they are like the unfolding of your astrological DNA. The timing for all of these changes is very personal, based solely on your own chart. Because evolution is slow, these are slow changes.

Your progressed chart is different from your birth chart in that it moves each planet by its amount of daily travel for each year of life after the person is born. Progressions show how you evolve and develop over time.

### South and North Nodes

This is your life long challenge. This is something most people work on all there life and never complete. While there are some that become aware of this and some do work this out. The Nodes are both the same in the goal. This is no easy task for the ones that are aware, what about the ones that are not aware of there life long goal?

*“There is not even a blade of grass, however infinitesimal, that is not ruled by some star”*

*~ Author Unknown ~*

## Chapter 8

### Basic Tarot Card Reading

*“Divination is the quest to understand more about the past, present, and future. In other words, Tarot readings are an attempt to understand ourselves better and discover how we might live better in the future”*

*~ Theresa Cheung ~*

Tarot, as we know it now, was invented sometime in the middle 15th century in Italy. It closely mirrored the playing cards of the day. Some believe that people had started using playing cards for divination purposes and the tarot were just a refined version of these cards. These basics playing cards had four suits of ten cards each. These cards were brought to Europe from the Islamic world. It is thought that tarot originated when gypsies and astrologers started using ordinary playing cards to tell fortunes.

During the 15th century, special cards were added to the playing cards. Later, these became known as the major arcana cards, then called the trumps or triumphs. The major arcana cards consist of 22 cards with titles rather than numbers and suit. Each one has a strong symbolic meaning and are considered to be the ‘leaders’ of the tarot deck. The remaining 56 cards are referred to as the minor arcana cards. usually these cards are split into four suits: cups, staves, swords and coins. Though there are many variations on this.

## ASTROLOGY & TAROT

Tarot has evolved since its original form. Becoming more complex and rich in symbology. The cards themselves have gained meaning over the years from the cultures that adopted their use. Some cards have come and gone, like The Pope, The Juggler, The Arrow etc. however, around the 17th century, tarot evolved into the form we now know it as having. Many famous alchemists and prophets have used tarot, including Nostradamus and Aristotle.

Tarot cards align with the energies projected onto them. As you shuffle the deck, you and your energies place the cards where they will be most beneficial for you. I always shuffle the deck until the cards feel right. Some people shuffle the cards three times then cut. it is really up to the user. Tarot tap into the spirit realm, or the energies of the user to give their readings.

For centuries, people have been using symbols as a type of divination. Tarot is no different. Each of the 78 cards has an individual meaning. Tarot is an interactive Divination art. The cards interact with each other, giving them new and more complex meaning.

You place the cards into various spread where the placement of each card gives it even further meaning. Where cards fall in the spread has a lot to do with how they interact with each other. A card representing the past will influence a cards representing the present and the future. There are many different spreads including the celtic cross, the three card spread, the spread of fates, the single card reading, the circle and cross and the ancestors to name a few.

## Chapter 9

### Divination Spreads

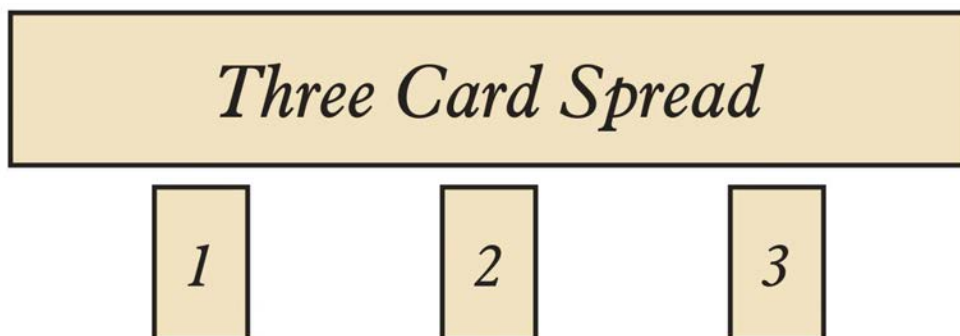
*“Life is the continuous adjustment of internal relations to external relations”*

*~ Herbert Spencer ~*

Here are a few Tarot or Rune spreads. I will keep it simple and brief. Make up your own spreads. Those are the ones which will work best for you. These are a few of my favorites. Remember, when spreading the cards, shuffle thinking of the question. Use your energy to focus the cards on what you want answered.

#### The Three Card Spread

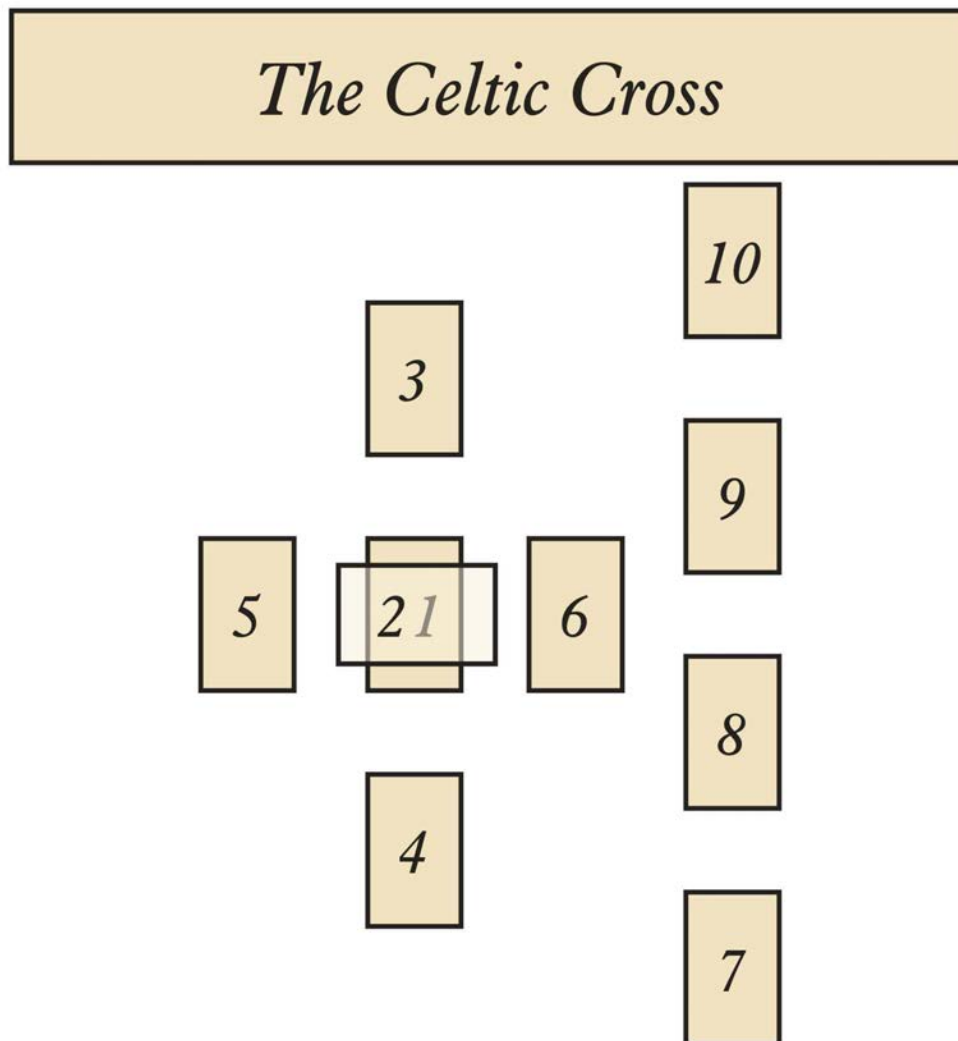
1. The Past
2. The Present
3. The Future



# ASTROLOGY & TAROT

## The Celtic Cross

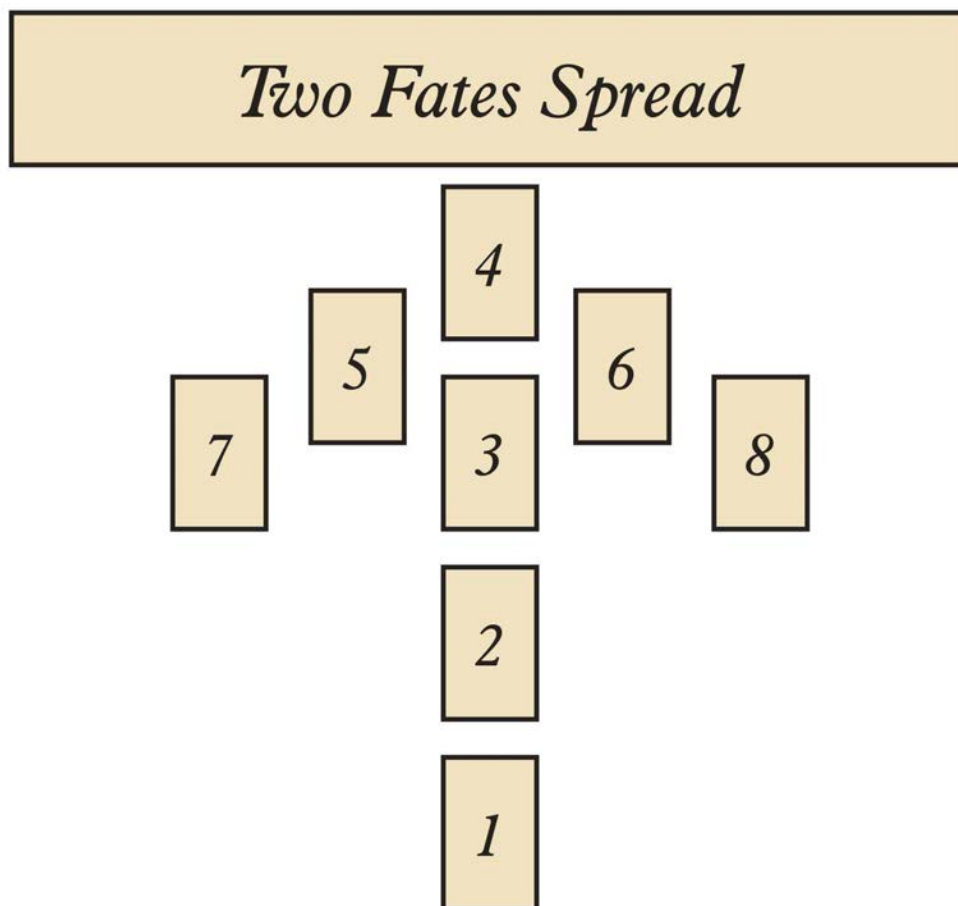
1. Influence or Atmosphere
2. Obstacles
3. The Eventual Goal
4. Influencing Events of the Past
5. The Immediate Past
6. The Immediate Future
7. Attitude or position on the Matter
8. The Environment Influencing the Matter
9. Hope and Fears
10. Final Outcome



# ASTROLOGY & TAROT

## Two Fates Spread

1. The Root of the Problem
2. The Immediate Past
3. The Present
4. The Immediate Future Choice
5. The First Choice
6. The Second Choice
7. The Impact of the First Choice on your Life
8. The Impact of the Second Choice on you Life

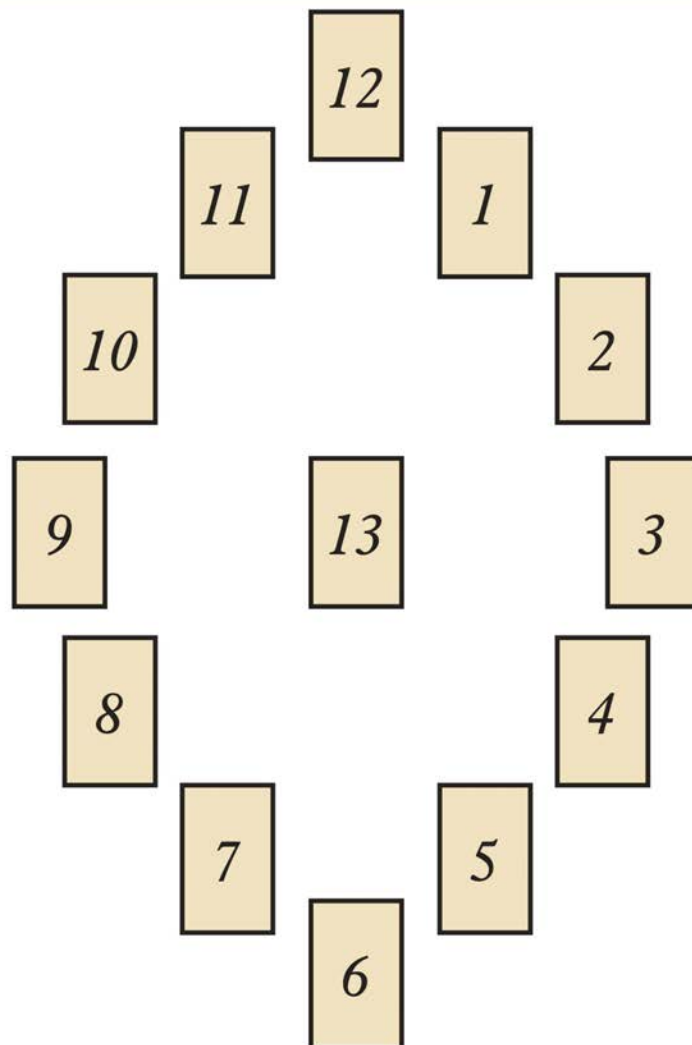


# ASTROLOGY & TAROT

## The Twelve Month Spread

- |             |                                 |
|-------------|---------------------------------|
| 1. January  | 8. August                       |
| 2. February | 9. September                    |
| 3. March    | 10. October                     |
| 4. April    | 11. November                    |
| 5. May      | 12. December                    |
| 6. June     | 13. Influence of the whole year |
| 7. July     |                                 |

### *The 12 Months Spread*



## Chapter 10

### The Major Arcana Cards

The major arcana consists of 22 cards numbered from 0 to 21. They go from complete ignorance to complete knowledge. The Fool, numbered 0 or unnumbered, represents complete ignorance and oblivion to the world around it. It is a card of innocence. Whereas The World, numbered 21, represents complete understanding. Each card represents only one step on the journey to understanding.

#### **0. The Fool**

The fool is the fearless traveler. He leaps before he looks and speak before he thinks. Positively associated with innocence, new beginnings, joy, fearlessness, and spontaneity. Negatively associated with thoughtlessness, immaturity, impulsiveness, lack of responsibility and lawlessness.

#### **1. The Magician**

The Magician is a person of new opportunities and ambition. He has incredible willpower, but is often overcome by his emotions. Positively associated with confidence, individuality, willpower, new beginnings, and inner potential. Negatively associated with trickery, deception, lack of compassion, indecision, and abuse of power.

#### **2. The High Priestess**

The High Priestess is the guardian of hidden secrets. She keeps the divine knowledge secretly tucked away for the



## ASTROLOGY & TAROT

right time to reveal. Positively associated with intuitiveness, understanding, wisdom, mystery, psychic ability, and the divine feminine. Negatively associated with lack of motherlyness, emotional insecurity, secretiveness, and hidden obstacles or opponents.

### 3. The Empress

The Empress is a symbol of love, fertility and motherhood. She represents compassion and devotion. Positively associated with fertility, birth, motherhood, harmony, nature, prosperity, joy, love, and artistic ambition. Negatively associated with domestic upheaval, emotional blackmail, over-protectiveness, poverty, infertility, unwanted pregnancy, and suppressed logical expression.

### 4. The Emperor

The Emperor is a sign of achievement and honor. He represents paternity and strong leadership. Positively associated with achievement, authority, protection, support, trustworthiness, discipline, provider, consolidation, reason, and willpower. Negatively associated with weakness, immaturity, failed ambition, status driven, tyrannical, and an overbearing nature.

### 5. The Hierophant

The Hierophant is a symbol of moral law and convictions. He is also a welcomed advisor and spiritual guide. Positively associated with advice, wise counsel, spiritual consolation, knowledge, identification, faith, conformity, and traditions. Negatively associated with misinformation, lack of faith, deviousness, bad advice, confusion, and disorderly conduct.

## ASTROLOGY & TAROT

### 6. The Lovers

The Lovers represent a new breath of life. They symbolize love, devotion and spiritual friendship. Positively associated with desire, new lover, relationships, physical attraction, love, sex, and commitment. Negatively associated with lust, moral lapse, temptation, indecision, separation, failed love affair, and emotional loss of control.

### 7. The Chariot

The Chariot symbolizes conflict and victory. It also represents unknown forces pulling you forward quickly. Positively associated with triumph, movement, change, self-belief, assertiveness, and good news. Negatively associated with rage, tyranny, overinflated ego, selfishness, arrogance, delays, and frustration.

### 8. Justice

This card directly means justice, fairness, and balance. It also has sway over partnerships and legal matters. Positively associated with justice, truth, integrity, balance, arbitration, responsibility, and fairness. Negatively associated with prejudice, injustice, bad judgement, bias, and bad advice.

### 9. The Hermit

The Hermit is a solitary person, one who looks for answers within and away from others. he represents a time for solitude and peace. Positively associated with introspection, solitude, guidance, advice, and patience. Negatively associated with obstinacy, suspiciousness, fear, impatience, folly, and arrogance.

## ASTROLOGY & TAROT

### 10. The Wheel of Fortune

The Wheel of Fortune is a sign of fates spinning round and round bringing in a new era. It represents the randomness of life and what comes at you. Positively associated with destiny, movement, vision, good luck, new cycle, and synchronicity. Negatively associated with obstacles, temporary bad luck, and unpleasant surprises.

### 11. Strength

The Strength cards shows the inner resolves you have. It represents the emotional, physical and spiritual strength associated with the situation. Positively associated with strength, willpower, compassion, patience, courage, triumph, and fortitude. Negatively associated with over compensation, fear, inertia, defeat, loss of opportunity, and entropy.

### 12. The Hanged Man

The Hanged Man symbolizes self-sacrifice and the unaware mind. He is representative of the blind sacrifice that is needed in the situation. Positively associate with transition, flexibility, rebirth, deliverance, and release. Negatively associated with materialism, inflated ego, lack of willpower, easily influenced, and martyrdom.

### 13. Death

The Death card symbolizes anything but that. It is a card of release and starting over. It represents the absolute, both the end and the beginning. Positively associate with endings, transformation, clearance, and sweeping change. Negatively associated with stagnation, loss of opportunity, loss of friendship, and fear of change.

## ASTROLOGY & TAROT

### 14. Temperance

The Temperance card is a card of self-control and abstinence. It represents the ability to handle overwhelming circumstances and emotions. Positively associated with harmony, health, moderation, compromise, peace, and self-control. Negatively associated with impatience, lack of foresight, conflict, quarrels, and domestic strife.

### 15. The Devil

The Devil is the embodiment of primal instincts. Heated emotions run strong with him, passions devour the mind and self-control is lost. Positively associated with permanence and commitment. Negatively associated with entrapment, lust, greed, ignorance, anger, tyranny, and obsession.

### 16. The Tower

The Tower shows the crumbling of stability and the breaking down of all things. It represents change, upheaval and unwanted change. Positively associated with re-evaluation, necessary change, and a blessing in disguise. Negatively associated with sudden change, downfall, disruption, and disaster.

### 17. The Star

The Star is a beacon shining through the darkness, a guiding light. It represents renewal of faith, hope and youth. Positively associated with hope, generosity, serenity, wishes coming true, good health, and spiritual awareness. Negatively associated with self-doubt, lack of trust, cynicism, and pessimism.

## ASTROLOGY & TAROT

### 18. The Moon

The Moon is a card of hidden and buried emotions. It casts an eerie light over everything. It represents hard travels and a rough inner journey. Positively associated with imagination, unexpected possibilities, and illumination. Negatively associated with fear, confusion, highly charged emotions, bewilderment, lies, and deceit.

### 19. The Sun

The Sun shines down on everything, giving warmth, life and joy. The Sun is the light at the end of the tunnel, the source of all that is wished for. Positively associated with happiness, greatness, enlightenment, vitality, good health, love, and fulfilment. Negatively associated with misjudgement, delays, potential failure, and inflated ego.

### 20. Judgement

Judgement heralds a time of reward. It is the card of wisdom and acceptance. It represents new phases in life and new relationships with the self. Positively associated with rebirth, rejoicing, absolution, new potential, and rewards for past efforts. Negatively associated with guilt, loss, self-reproach, delays, fear, and obstinacy.

### 21. The World

The World is the end. The arrival of all the desires you hoped for. It is the beginning and the end, the dream, the hope and wish itself. Positively associated with fulfilment, completion, satisfaction, joy, wholeness, and success. Negatively associated with stagnation, lack of will, impatience, and delays.

# ASTROLOGY & TAROT

## Chapter 11

### The Minor Arcana

Most of the cards in the tarot deck are minor arcana cards. These cards fill out the deck, making it more balanced and complete. The 56 cards of the minor arcana are split into four suits. Each suit represents a different aspect of life. Numerology can be used in conjunction with the minor arcana as the cards are numbered from 1 to 10, or Ace through 10. There are four nobles cards in each suit as well, the Page, Knight, Queen and King. This makes 14 cards in each suit.

#### The Suits of the Minor Arcana

##### *Wands, Staves or Spears*

The first suit represents a long object, whether it be a staff or wand by name, it usually represents physical labor. This suit is related to the physical body. It encompasses growth, ideas and creativity. It is associated with the element of fire and the season of spring.

##### *Cups*

This suit represents emotional desire. The filled cups are symbolic of filled emotions. It encompasses affairs of the heart, desires and the inner self. It is associated with the element of water and the season of summer.

##### *Pentacles, Shields or Coins*

This suit is a round object of some sort, ranging from shields to coins. It represents the material possessions. It encompasses

## ASTROLOGY & TAROT

money, wealth, health, prosperity and property. It is associated with the element of earth and the season of autumn.

### *Swords, Knives or Daggers*

This is the suit of all things with sharp edges. It represents the intellectual self. It encompasses ideas, thoughts, morality, and strife. It is associated with the elements of air and the season of winter.

## The Noble Cards of the Minor Arcana

### *The Page*

The Page is a bearer of messages and the harbinger of communication. This card represents youth and the beginnings of maturity.

### *The Knight*

The Knight is a traveler, one who brings change and good deeds into the world. This card represents new relationships, friendship, courage and stability.

### *The Queen*

The Queen is a strong female. She has the ability to lead, listen and guide. She represents the completion relationships, jobs and projects, also a strong emotional person who knows where they are going and what they want.

### *The King*

The King is a strong male figure. He is the leader of the suit, the end of it and the highest mark. He represents a mature and wise person who knows what they can and cannot accomplish.

# ASTROLOGY & TAROT

## The Number of the Minor Arcana

### *One (Ace)*

Represents beginnings, action, will, new ideas, creative power, potential, first causes, primary impulses, and positive activities.

### *Two*

Represents partnerships, relationships, polarities, balancing, duality, choices, patience, stillness, and positive and negative.

### *Three*

Represents synthesis, growth, creativity, abundance, collaboration, friendship, artistic expression, refining plans, and preparing to take action.

### *Four*

Represents foundations, discipline, work, order stability, solidity, tangible achievement, and practical attainment.

### *Five*

Represents new cycles, change, progress, shifts, adjustment, fine tuning, instability, challenge, versatility, freedom, and courage.

### *Six*

Represents balance, health, beauty, harmony, contentment, relaxation, satisfaction, equilibrium, marriage, family, and sympathy.

### *Seven*

Represents Spirituality, wisdom, perfect order, the macrocosm, religion, luck, magick, and multiple options.



## ASTROLOGY & TAROT

### *Eight*

Represents victory, will, success, regeneration, rebirth, reevaluating, putting things in order, and setting priorities.

### *Nine*

Represents compassion, integration, movement, flexibility, fulfilment, attainment and benevolence.

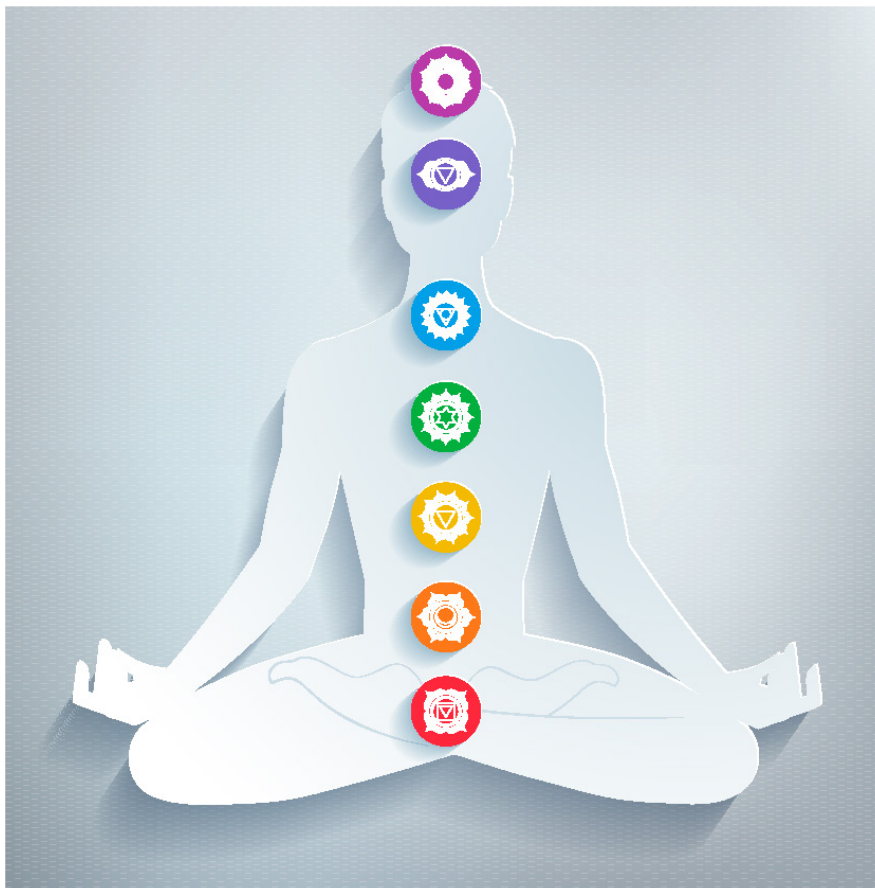
### *Ten*

Represents transition, renewal to a new cycle, completion, wholeness, mastery, excess, and overabundance.

## Chapter 12

### The Seven Basic Chakras

There are 7 basic Chakras in our body. Each has a location, a function, an influence, color and many other things. They are the seven centers of energy in the human body.



We are starting at the top instead of the bottom...

#### *Chakra 7 – The Crown*

It's colour is violet and is located at the top of your head. It is associate with the cerebral cortex, central nervous system and the pituitary gland It is concerned with information,

## ASTROLOGY & TAROT

understanding, acceptance and bliss. It is said to be your own place of connection to God, the Chakra of Divine purpose and personal destiny. Blockage can manifest as psychological problems

### *Chakra 6 – The Third Eye (or Brow Chakra)*

It's colour is Indigo (a combination of red and blue). It is located at the centre of your forehead at eye level or slightly above. This Chakra is used to question the spiritual nature of our life. It is the Chakra of question, perception and knowing. It is concerned with inner vision, intuition and wisdom. Your dreams for this life and recollections of other lifetimes are held in this Chakra. Blockage may manifest as problems like lack of foresight, mental rigidity, 'selective' memory and depression.

### *Chakra 5. The Throat*

It's colour is blue or turquoise and is located within the throat. It is the Chakra of communication, creativity, self-expression and judgement. It is associated with your Neck, shoulders, arms, hands, thyroid and parathyroid glands. It is concerned with the senses of inner and outer hearing, the synthesising of ideas, healing, transformation and purification. Blockage can show up as creative blocks, dishonesty or general problems in communicating ones needs to others.

### *Chakra 4 – The Heart*

It's colour is green and it is located within your heart. It is the centre of love, compassion, harmony and peace. The Asians say that this is the house of the soul. This Chakra is Associate with your lungs, heart, arms hands and thymus gland. We fall in love through our heart Chakra, then that feeling of unconditional love moves to the emotional centre commonly known as the solar plexus. After that it moves into the sexual centre or Base

## ASTROLOGY & TAROT

Chakra where strong feelings of attraction can be released. When these energies move into the Base Chakra we may have the desire to marry and settle down. Blockage can show itself as immune system, lung and heart problems, or manifest as inhumanity, lack of compassion or unprincipled behaviour.

### *Chakra 3 – The Solar Plexus*

It's colour is yellow and is located a few inches above the navel in the solar plexus area. This chakra is concerned with your digestive system, muscles, pancreas and adrenals. It is the seat of your emotional life. Feelings of personal power, laughter, joy and anger are associated with this centre. Your sensitivity, ambition and ability to achieve are stored here. Blockage may manifest as anger, frustration, lack of direction or a sense of victimisation.

### *Chakra 2. The Sacral (or Navel Chakra)*

It's colour is orange and it is located between the base of your spine and your navel. It is associated with your lower abdomen, kidneys, bladder, circulatory system and your reproductive organs and glands. It is concerned with emotion. This chakra represents desire, pleasure, sexuality, procreation and creativity. Blockage may manifest as emotional problems, compulsive or obsessive behaviour and sexual guilt.

### *Chakra 1. the Base (or Root Chakra)*

It's colour is red and it is located at the perineum, base of your spine. It is the Chakra closest to the earth. It's function is concerned with earthly grounding and physical survival. This Chakra is associated with your legs, feet, bones, large intestine and adrenal glands. It controls your fight or flight response. Blockage may manifest as paranoia, fear, procrastination and defensiveness.

## ASTROLOGY & TAROT

The chakras symbolize the different stages we are to go thru to attain the ultimate. We start at the base center and work up. The ultimate is the crown center, which is almost impossible to attain.

In meditation we focus on the base center, bring a bright light up thru each chakra to the crown center and back taking deep breaths thru your nose and letting go thru our mouth slowly. Only focusing on the light and the chakras.

If there is a blockage you will feel it. This is why you need to understand chakra meditation before you start. It's a wonderful way to cleanse your body of blockages.

If one of your chakras is blocked you will feel a strange sensation, or different feelings, just relax and either stop or continue on by focusing on just that chakra to find out what the problem is. It can be worked out(healed).

This is why people feel out of balance. One or more of there chakras are usually blocked. When you do the meditation you need to be in a quiet place and peaceful. Sitting with your feet on the ground and the palms of your hands facing up. Close your eyes and take a few deep breaths before you start so you can relax. Then visualize a bright light and follow the above.

# ASTROLOGY & TAROT

## Summary

*“We need not feel ashamed of flirting with the zodiac.*

*The zodiac is well worth flirting with”*

*~ D.H. Lawrence ~*

We've covered a lot of ground in a very short period of time, and you may want to review this information again to make sure you've got it all.

Whilst the interpretations of Astrology and Tarot, on the face of it, appears to be subjective, the concepts are simple and well founded. And although you may find yourself wondering how all of them relate to everyday life, you will find more answers and a greater understanding as your knowledge of Astrology and Tarot grows,

Good Luck!

*“At the moment I am looking into astrology, which seems indispensable for a proper understanding of mythology. There are strange and wondrous things in these lands of darkness.*

*Please, don't worry about my wanderings in these infinitudes. I shall return laden with rich booty for our knowledge of the human psyche”*

*~ Carl Jung ~*

The Get Started Series, presented  
to you by FS Publications